

LSS: SCIENTIFIC SUPPORT AT THE BORDER FOR INTERDICTION

Patricia Hawes Coleman, Director
Laboratories & Scientific Services

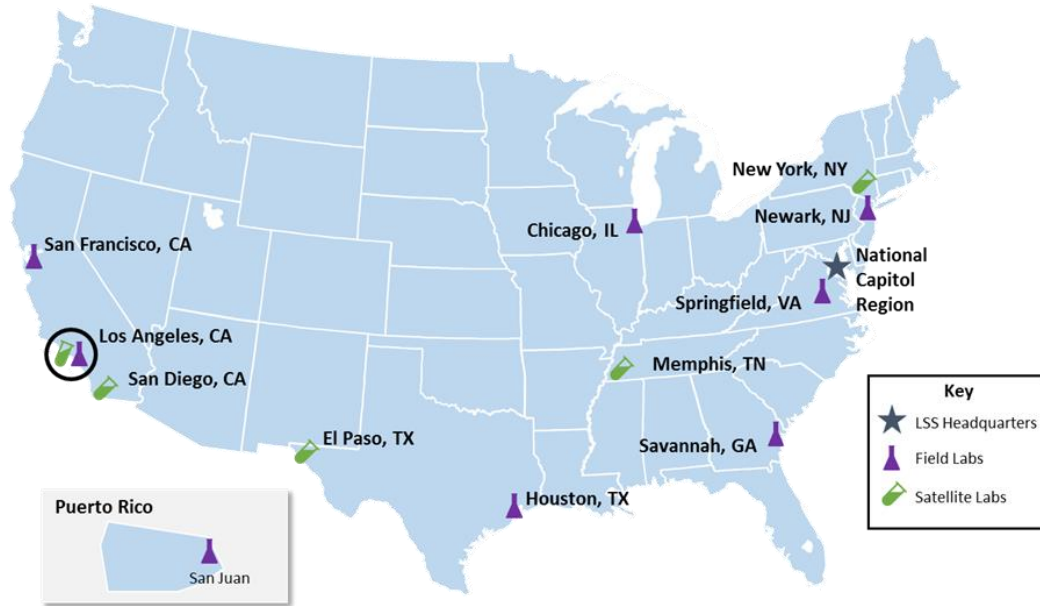
November 2018

THE CENTER FOR
FORENSIC SCIENCE
RESEARCH & EDUCATION



U.S. Customs and
Border Protection

LSS Field Laboratories



LSS consists of **eight full-service field laboratories** and several **satellite laboratories**.

- ▲ **Field Laboratories:** Newark, NJ; Savannah, GA; Houston, TX; San Francisco, CA; Los Angeles, CA; Chicago, IL; Springfield, VA; San Juan, Puerto Rico
- ★ **National Capital Region:** LSS HQ; Interdiction Technology Branch; Teleforensics Center
- ▾ **Satellite Laboratories:** JFK International Mail Facility; Joint California Forensics Center @ San Diego Sector; Memphis FedEx facility; LA/PriceMet; El Paso, TX

**Field Lab
Combined
Stats
FY18**

*Number of Forensic Samples
Processed*

41,355

Number of Cases Processed

26,797

*Number of Trade Samples
Analyzed*

15,168

Addressing Threats with Innovation

LSS provides three key pillars of Support

1

REACHBACK



2

**FIELD-FORWARD
SCIENTIFIC SUPPORT**



3

**INTERDICT
CENTER**



LSS Narcotics Reachback

LSS Teleforensic Center

- Serves CBP as a **24/7/365 scientific and technical resource** for suspect WMD events and technical advice
- Successfully adjudicated **13,198 cases in FY17 and 12,673 FY18**

Narcotics Reachback

- Launched on **October 1, 2018**
- **24/7/365 scientific and technical support** for suspect illicit narcotics and other chemical threats
- Scientists rapidly **adjudicate presumptive screening results** of suspect chemical threats encountered by officers and agents and **provide further advice** for law enforcement actions



Narcotics Reachback Accomplishments

- Since 2014, LSS has provided reachback assistance on suspected opioids, such as fentanyl and fentanyl analogues.
- Reachback Combined Stats FY17 – FY18
 - ❖ FTIR Triage (legacy program) cases: 17,016
 - ❖ Gemini Triage cases (2/17 – FY18): 534



LSS INTERDICT CENTER



Analysis of Synthetic Drugs

Dedicated to analyzing and characterizing synthetic drugs being detained and seized by CBP in the field



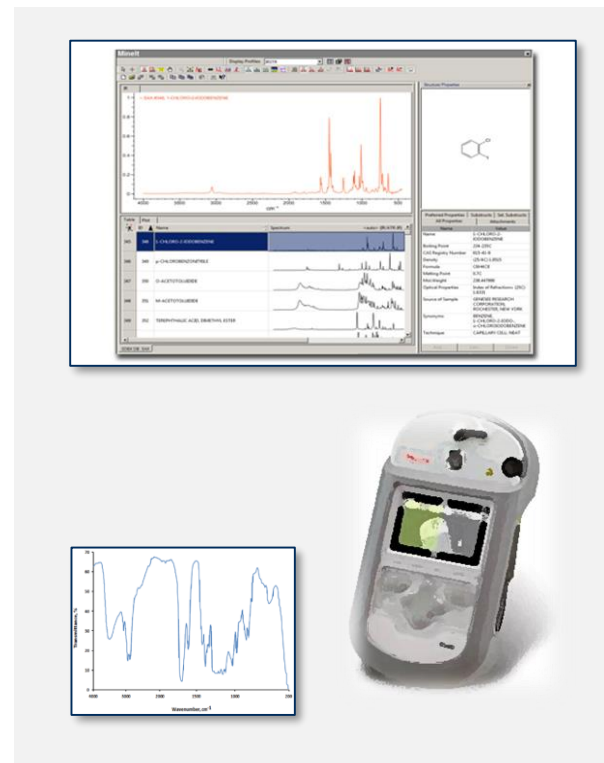
Centralization of Discoveries

Serve as the LSS central point for new synthetic discoveries (opioids, cannabinoids, cathinones, etc.)



User Library Maintenance

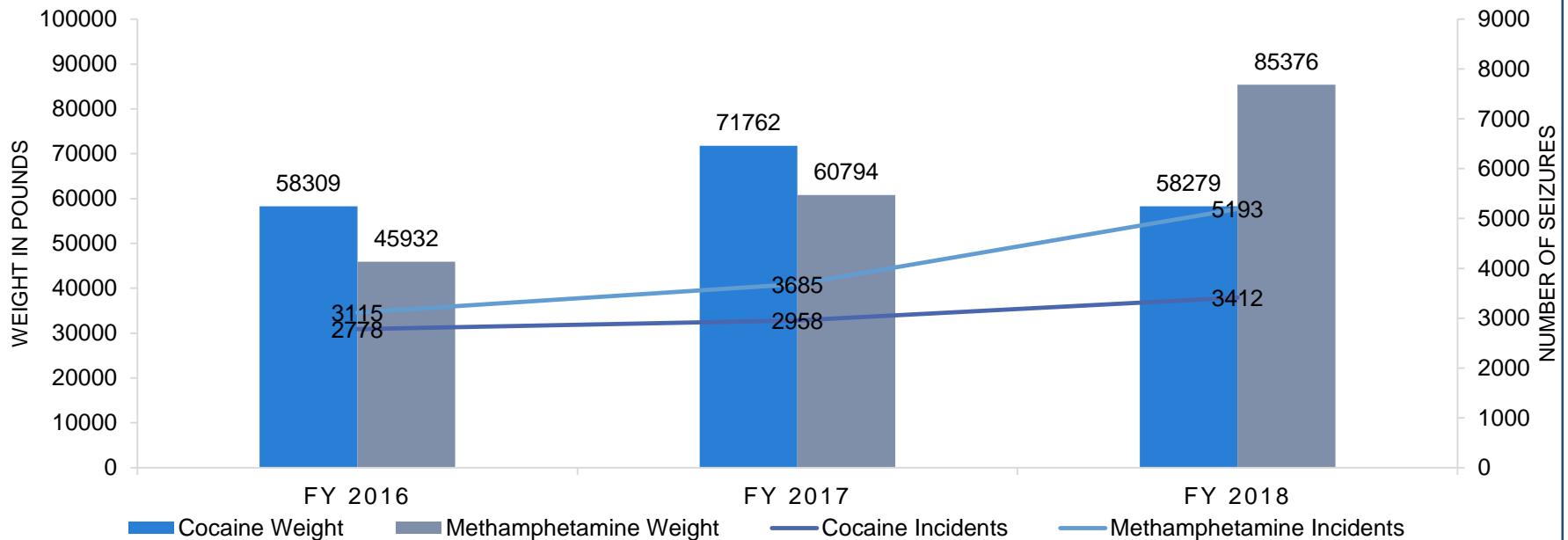
Responsible for developing and updating the deployed hand-held detectors' user library as new synthetics are identified.



CBP NARCOTIC SEIZURES

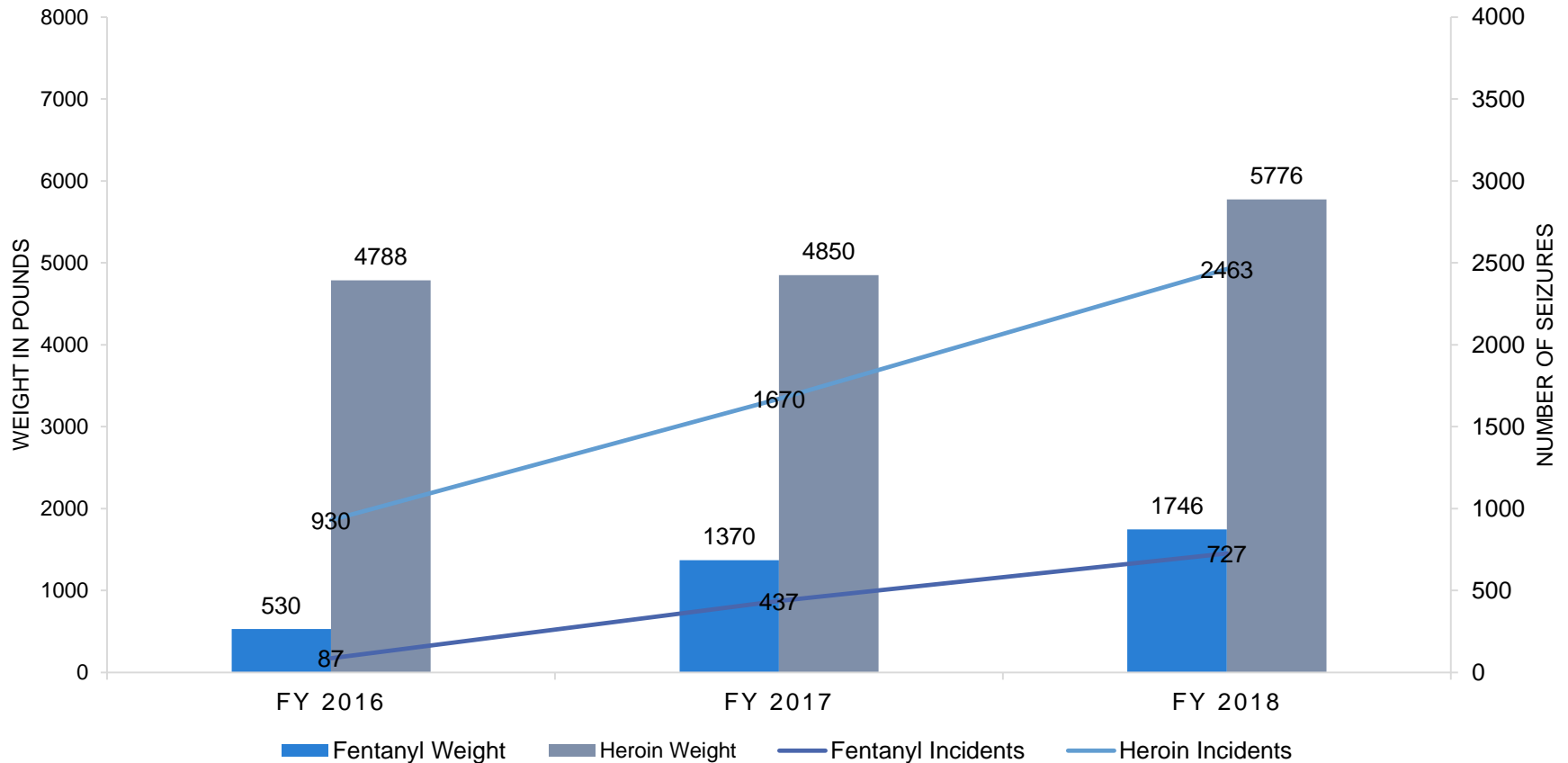
As the nation's border enforcement agency, CBP is the **first line of defense** in stemming the flow of narcotics into the United States and our communities.

METHAMPHETAMINE & COCAINE

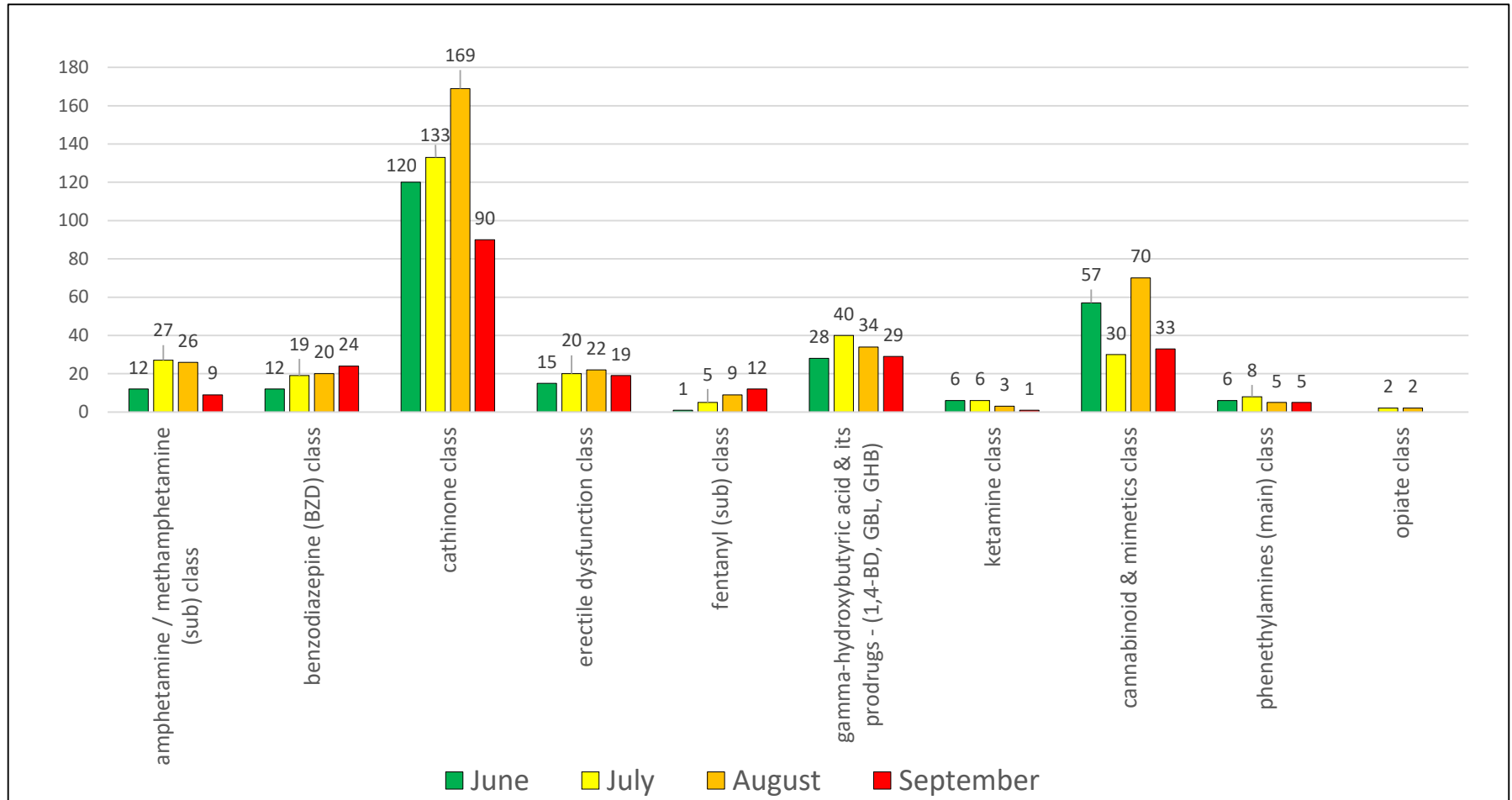


CBP NARCOTIC SEIZURES

FENTANYL & HEROIN



CBP NARCOTIC SEIZURES



VOLUME OF SCREENING

The frequency of CBP's encounters with fentanyl and suspect synthetic opioids has increased, particularly in international mail.

Approximately 800,000 pieces of mail pass through the JFK international mail facility daily.

Express consignment carriers, such as the FedEx, see more than 900,000 parcels shipped to the US daily.

Field-forwarded scientists, co-located with officer and agents in the field at International Mail Facilities & Express Consignment Courier Facilities

Creating satellite laboratories at the top ten mail facilities staffed with a least two chemists

PARTNERSHIPS

CBP/LSS-DOJ/OCDETF Partnership

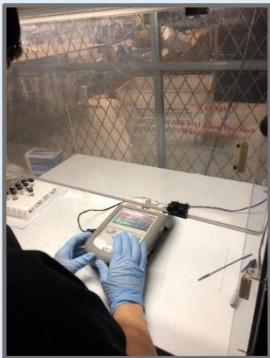
- Force multiplier for the faster identification of emerging NPS interdicted at the US border.
- Innovative approach to increase intelligence and information reporting of discovered NPS to Federal, State, local law enforcement and public health community.
- Great potential to inform and accelerate scheduling of controlled substances, identify emerging drug threats faster, and help prevent their introduction into the United States.



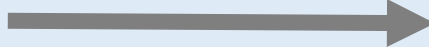
NEW SYNTHETIC DRUGS

LSS is seeing a new synthetic opioid on a monthly basis.

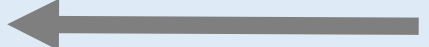
Unknown presumptive results require additional time to determine if the suspect substance is controlled, a synthetic opioid, a hazard, or licit material.



FIELD



LAB



RESOURCE DEMANDS

To keep pace with the potential volume of unknown substances that may be transiting the U.S. border:



OBTAIN

CBP has deployed handheld technology at multiple locations for use by officers and agents that provides the operator with a presumptive identification of the material that was tested.



ANALYZE

Operationalizing a 24/7 narcotics reachback center to support CBP officers and agents with near real-time adjudication of presumptive identifications of suspect narcotics.



DETENTION

OR



RELEASE